

4 Zone using Dante Input Plates

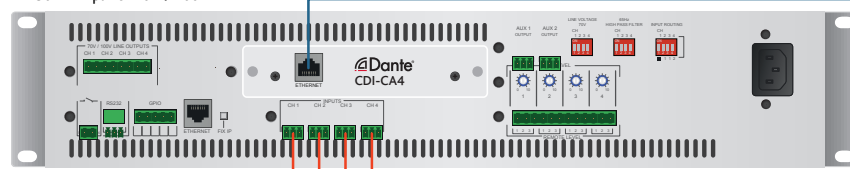
DLM-1 & CV4250

A 4-zone gym/fitness/yoga studio taking advantage of DLM-1 to provide four zones with multiple inputs and channel flexibility.

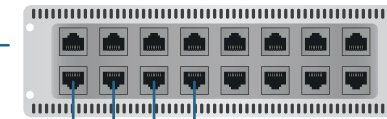
A simplified solution without a Zone Mixer or Front End controller.

www.cloud.co.uk

CV4250 Amplifier with Dante option card
4x250W Amplifier 70V / 100V



Dante / Control Network Switch



BLUETOOTH/
WEB BROWSER

Zone 1



STREAMING
DEVICES

Zone 2



MUSIC PLAYER
MP3 / PC / SERVER

Zone 3



Zone 4

